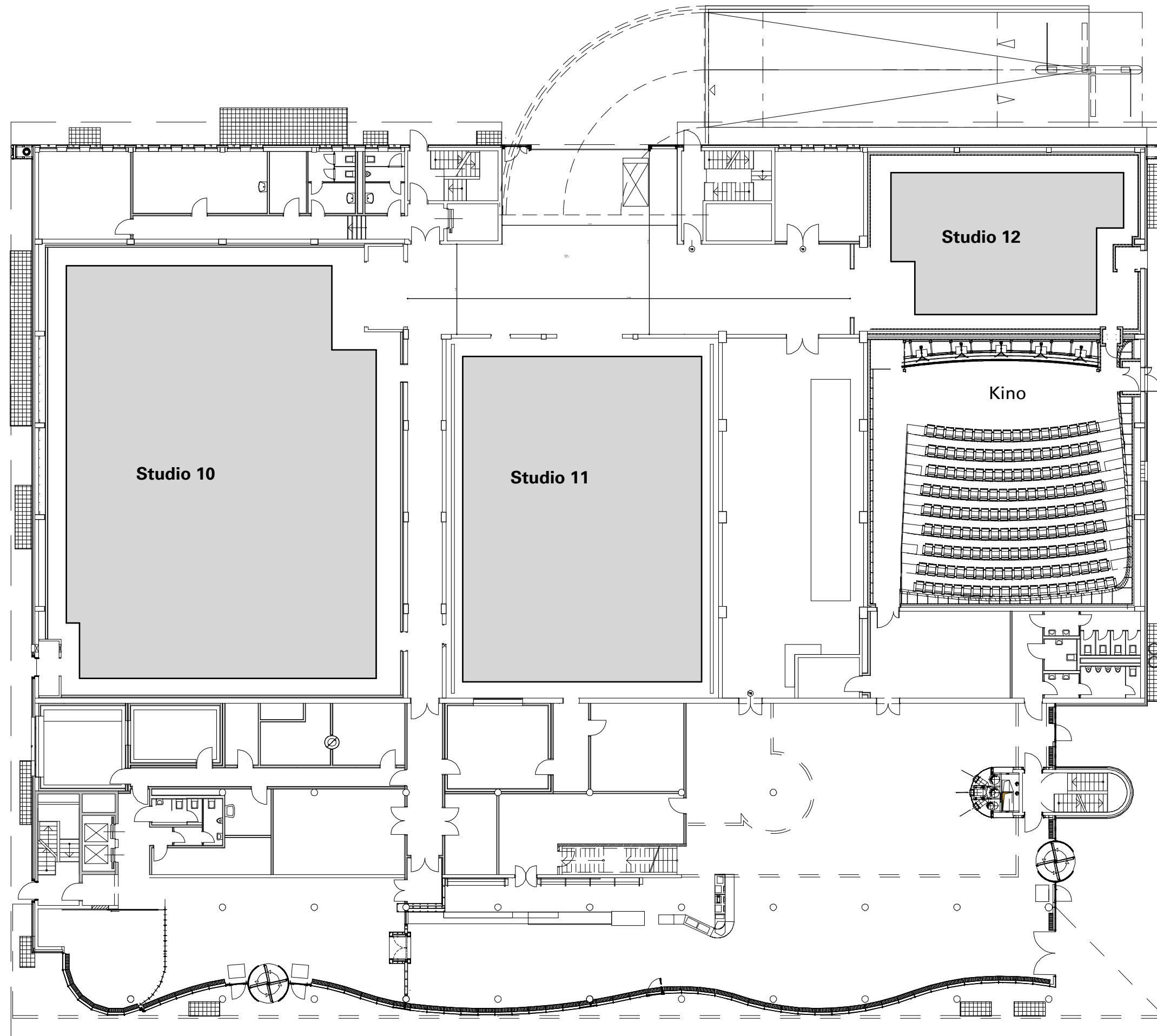


fx Center

Studio 10/11/12 Stage 10/11/12

Grundriss M 1:250 @A3
Floor Plan 1:250



Studiofläche ges. 1115m²
Total Area 12002ft²

Studio 10
Baupläche 18,90 x 25,20m
Bauhöhe (10) 7,50m
Stage 10
Construction Area 61,99 x 82,66ft
Construction Height (33) 24,6ft

Studio 11
Baupläche 19,90 x 14,60m
Bauhöhe (7,90) 7,50m
Stage 11
Construction Area 65,27 x 47,89ft
Construction Height (26) 124,6ft

Studio 12
Baupläche 14,20 x 8,70m
Bauhöhe 6,00m
Stage 12
Construction Area 46,58 x 28,54ft
Construction Height 19,68ft

max. Bodenbelastung 1000kg/m²
max. Floor Load Capacity 200lb/ft²

Alle Maße sind vor Ort zu prüfen.
All measurements are to be checked on site.

Kontakt:
Contact: Stage Rental

Studio Babelsberg AG
Studio- und Atelierbetrieb
August-Bebel-Straße 26-53
14482 Potsdam

+49 (0) 331 / 721 21 06
StageRental@studiobabelsberg.com

www.studiobabelsberg.com