

## Neue Film 2

# Studio 20 Becken

## Stage 20 Watertank

**Grundriss M 1:250 @A3**  
Floor Plan 1:250

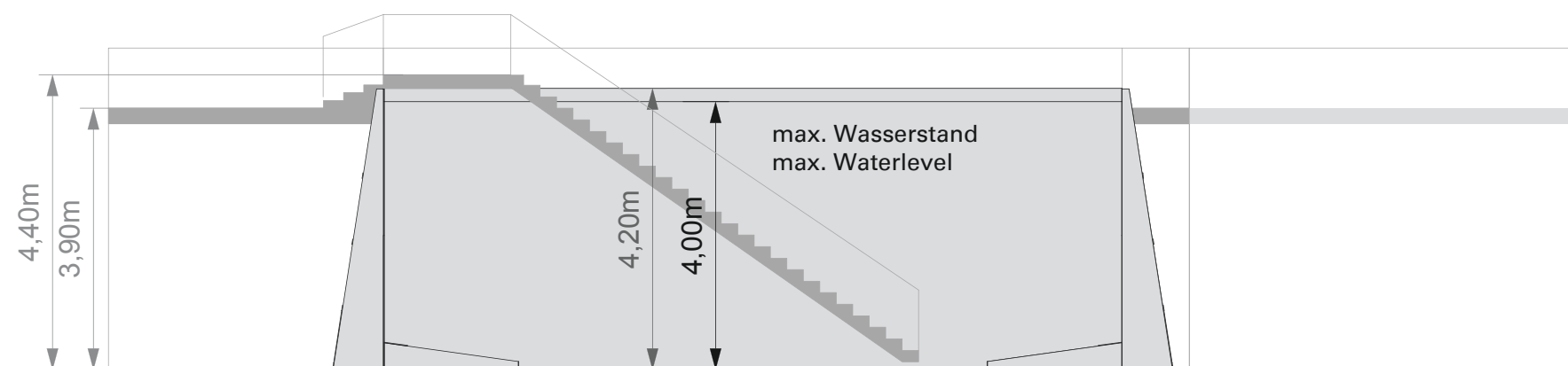
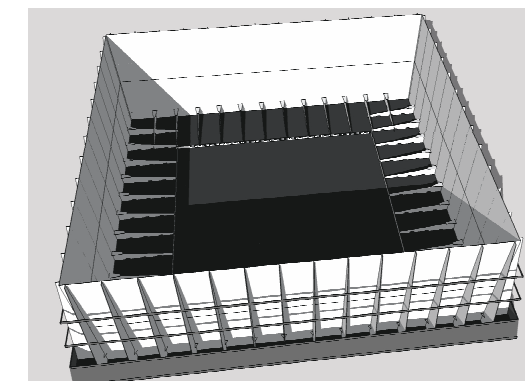
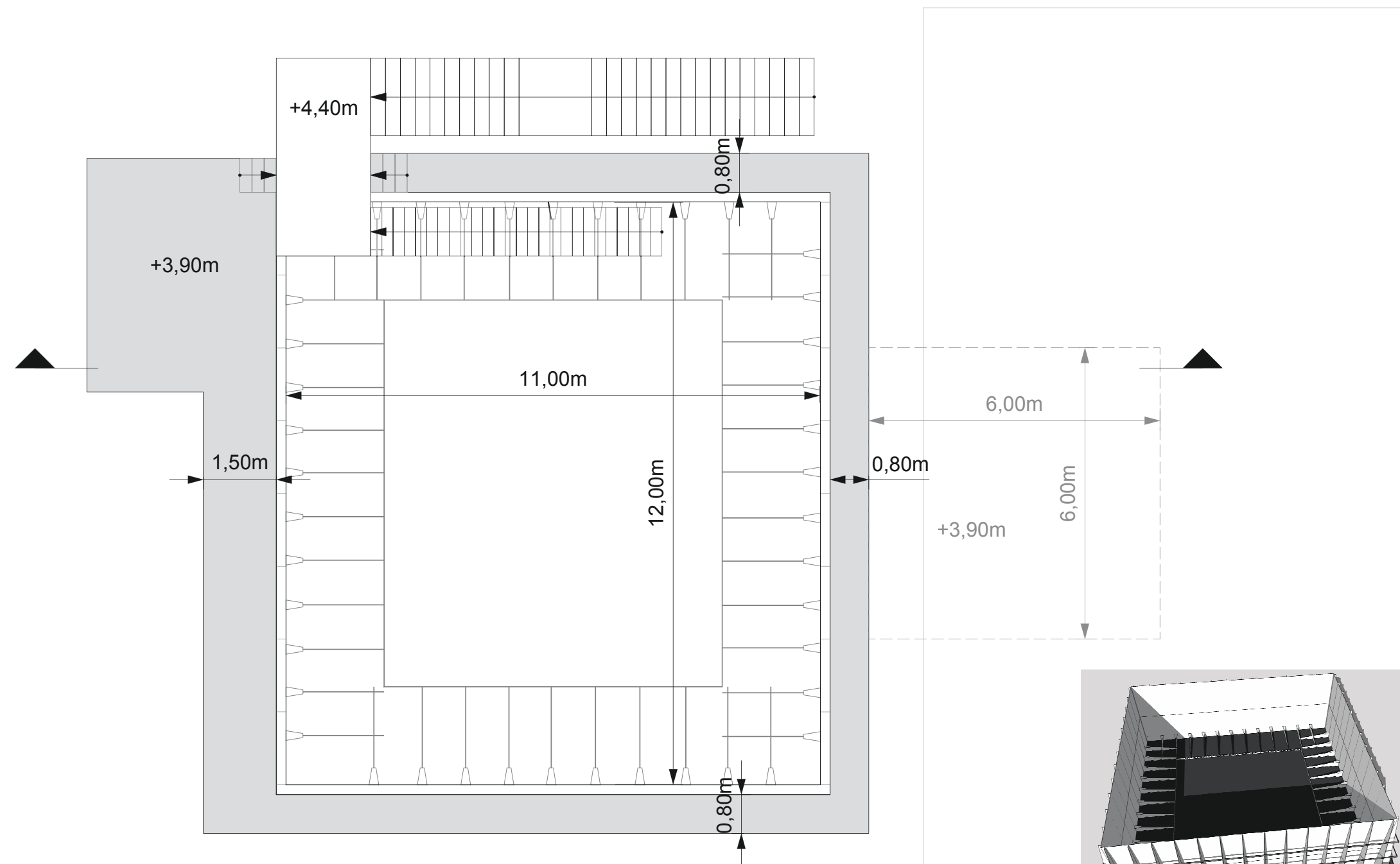
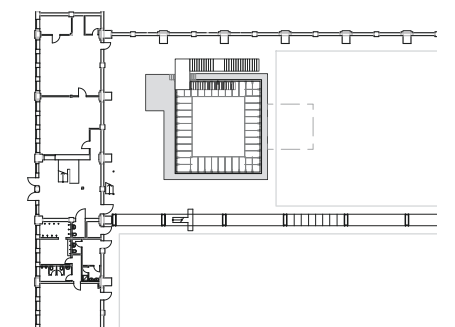
Volumen ges. 528m<sup>3</sup> / 528.000l  
Volume 926150 Pint

Baufläche 11,00 x 12,00m  
Construction Area 36,08 x 39,36ft

Wassertiefe 4m  
Waterlevel 13,12ft

max. Bodenbelastung 1000kg/m<sup>2</sup>  
max. Floor Load Capacity 200lb/ft<sup>2</sup>

Alle Maße sind vor Ort zu prüfen.  
All measurements are to be checked on site.



**Kontakt:**  
Contact: Stage Rental

**Studio Babelsberg AG**  
Studio- und Atelierbetrieb  
August-Bebel-Straße 26-53  
14482 Potsdam

+49 (0) 331 / 721 21 06  
StageRental@studiobabelsberg.com

[www.studiobabelsberg.com](http://www.studiobabelsberg.com)